A photograph of a residential neighborhood. In the foreground, there is a grassy lawn and a paved road. In the middle ground, there is a two-story house with green siding and a white door. Behind the house, a large wind turbine is visible against a clear blue sky. The turbine has three blades and a tall tower. There are several trees around the house, some with green leaves and some with bare branches. The overall scene suggests a conflict between renewable energy and residential development.

Put People First

Wind turbines do not belong in neighborhoods – near people's homes

A blue wavy banner with a gradient from light blue at the top to a darker blue at the bottom. The word "Fairhaven" is written in white, bold, sans-serif font in the center.

Fairhaven

Two 1.5 MW wind turbines began operation on May 5, 2012.

One month later, 130 complaints were registered in the town.

Two years later there were 741 complaints.

Too Close

Listen to Fairhaven Wind Turbine Neighbors



John Methia

Fairhaven, MA –

Lives 2,000 ft. from the nearest turbine.

“I live 2,000 feet away from the turbines. The sound is quite disturbing. The sound is like a jet flyover that doesn’t stop. We hoped for the best when the turbines were erected and now we fear the worst.”

Karen Isherwood

Fairhaven, MA –

Lives less than 1,500' from the nearest turbine

“I welcomed the developer to my home and he said everything would be fine. He lied to me. It is not just the noise volume, the sound can go anywhere from a whoosh whoosh to a traffic level to an airport. I would never purchase a home near an airport, but that’s what I’ve got here with the turbines. I am desperately calling out for help because I have medical issues that have been exacerbated by the noise. If I don’t get help I will have to abandon my home.”

...My situation is difficult in itself and makes me prone to heart palpitations, amongst other things. When the turbine started running those became more severe, and instead of getting maybe one a week I started getting four, five a week and I find that more often [when] I don't get a night's sleep from the turbine. Karen Isherwood at DPU Hearing January 2014.



Louise Barteau

Fairhaven, MA –

Worked 1,400' from the nearest turbine.

“Last September, I rented a teaching studio space without any prior knowledge of the imminent construction of two 400-foot wind turbines approximately 1,200 feet away, which were constructed over the winter. I have already experienced feelings of pressure behind my eyes, confusion, and nausea in the studio. I asked the landlord to let me out of my lease early, and moved out this week rather than expose myself to further symptoms.”

Fairhaven

View of Fairhaven
North turbine from
Teaching Studio
Window

1,200 feet from
wind turbine



Louise Barteau - Fairhaven...but I know that the state's not helping us. MassDEP came down. I went out with them. We sampled those turbines. We found multiple measured exceedances. Ten nights sampling, five nights with these exceedances of the state statutory noise regulation. And what is being done? Nothing. The developer came up with a mitigation plan; the town voted to accept it because they don't know any better and because they're all following this agenda. It doesn't do anything for the people in my town. Nothing. They're going to shut the turbines down occasionally, between 12 at night and four in the morning. DPU Hearing



Chelsea Isherwood

lives 1500 feet from one of the Fairhaven turbines

“When they were turned on I didn’t really put much stock to it at first until one night I was sitting in my room trying to get some homework done—I’m trying to finish my master’s—and just realized I couldn’t sit there any more. I couldn’t concentrate. Everything I was reading just wasn’t being processed. And I felt really, really anxious. My bedroom is at the back of the house and the turbines are the loudest there. There are some nights when they are actually bothering my mother’s room, the way the sound seems to bounce around the house...”

Listen to Chelsea Isherwood testifying at the DPU hearing – January 2014 at Bunker Hill Community College



Falmouth

Wind 1 and Wind 2 are two 1.65 MW town-owned wind turbines

The Webb-Notus is a 1.65 MW wind turbine

The Woods Hole Research Center has a 100 kW wind turbine

FALMOUTH MA – Wind 1 and Wind 2 are two 1.65 MW town-owned wind turbines; there is also a privately-owned wind turbine known as Webb-Notus which is 1.65 MW, and a 100 kW wind turbine at Woods Hole Research Center.



Neil Andersen, Falmouth, MA

Lives $\frac{1}{4}$ mile from the nearest turbine.

“No human being can live with the torturous, low frequency pressure pulses that are emitted by the blades of the turbine. These repetitive pulses cause headaches, unusual head and ear pressure, ringing in the ears, heart palpitations, increased blood pressure, and loss of sleep, to name just a few of the physical ailments that my family has suffered as a direct result of living too close to the turbine. The psychological effects have us on maximum doses of anti-depressants, relying on sleeping pills in an attempt to get some sleep.

“We have been almost completely wiped out financially, having been forced to close my homebuilding business during the fall of 2010. Lawyers and doctors fees, as well as money involved with the costs of being forced away from our home when the turbine is particularly bad, continue to dissolve our life and retirement funds.

“Initial complaints to the Board of Health, the Building Commissioner, the local police, the State Police, State Representatives, the Attorney General’s office, all went without any action. I even attempted to file a criminal assault and battery charge against the turbine!”



Neil Andersen with the calendar he keeps to record the effects of the turbines on his health

Barry Funfar, Falmouth, MA

Lives 1,558' from the nearest turbine.

“My primary care physician advised me to move away from the turbines as soon as possible. She told me that I, with my PTSD, could not tolerate living close to a turbine, that I must move away from the noise. A number of my individual and group counselors have given the same advice. Since that time my condition has only gotten worse.

“The turbines sound to me like a rainforest full of giant munching caterpillars, or 500 enemy soldiers marching towards me but always being the same distance away, or a jet engine helicopter forever turning-up or shutting-down. These are all triggers to my PTSD.

“The gardens I tended for 33 years have now been neglected for over two years because of these turbines. With the noise of the turbines there is no concentration possible for anything else. I cannot safely go out into my own yard. At least four home businesses have been shuttered because of these turbines. My own included. What price must we pay to live peacefully in our own homes? At this stage my wife and I are avoiding Falmouth and our own home as much as possible. Our Town government has given us the taste of being second class citizens. It has changed our healthy home environment to a place we must avoid.”



Photo of Barry Funfar on his porch by DEBEE TLUMACKI FOR THE BOSTON GLOBE.

<http://www.bostonglobe.com/lifestyle/2014/01/24/falmouth-veteran-battles-wind-turbines-and-health-woes/dVF6q3ur3oO4706FRpKPLJ/story.html>



Abandoned Home in Falmouth

Sue and Ed Hobart had to abandon their home which is located 1,650 feet from the Webb wind turbine (seen behind the home). Sue and Ed lived in the home that they had built to their specification. Sue planted 73 different types of hydrangeas which she used for her wedding floral business.

Abandoned Home in Falmouth

Sue Hobart says she abandoned her dream house in Falmouth to get away from the 400-foot turbine behind it, which she believes gave her wind turbine syndrome. “I hadn’t slept for two and a half years,” she says.

Bad Vibes by Amy Crawford. Boston Magazine January 2014

<http://www.bostonmagazine.com/news/article/2014/01/28/wind-turbines/3/>

Kingston

There are four new 2 MW wind turbines:

- three known as the O'Donnell turbines
- one called Independence located near Route 3.

KINGSTON MA – There are four new 2 MW wind turbines: three known as the O'Donnell turbines, and one called Independence located near Route 3.



Doreen Reilly, Kingston, MA – Lives 900' from the nearest turbine.

“The Independence turbine has been disrupting our sleep and also causing annoyance when going about our daily lives. In the past week alone there were two nights that were unbearable to sleep. The health of my family is at risk from not sleeping at night due to the noise from the turbine. My children are losing sleep. We are all being affected from lack of sleep when the wind is blowing west or northeast.

”I love my town, home and my neighborhood. I am very disappointed in the Town of Kingston for allowing this land to be leased to a developer to site this turbine. I want to stay at my home that I have lived at for 19 years and have never had issues sleeping!”

See the strobe effect captured in this Boston Fox25 video inside Doreen Reilly's Leland Road home in Kingston.

<http://www.myfoxboston.com/video?clipId=8327526&topVideoCatNo=238258&autoStart=true>

Tim Dwyer, Kingston, MA – Lives 1,600' from the nearest turbine.

“Since the Kingston turbines have become operational, I have personally held conversations with local residents from multiple neighborhoods that have experienced symptoms including headaches, sleep disturbance, tinnitus, ear pressure and vertigo.

“Because the Kingston turbines were constructed with an unprecedented lack of public notice or involvement, these residents were completely unaware that their sudden and unexplained symptoms could result from living in close proximity to industrial wind turbines. I’m hopeful that the town of Kingston will follow the lead of other similarly impacted communities, and establish a method of surveying its residents to determine the true extent of the problem.”



O'Donnell Wind Turbines Noise Evaluation, Kingston MA

Noise Control Engineering, Inc. April 23, 2013

Figure 2: Aerial Map of Measurement and O'Donnell Wind Turbine Locations



Scituate

??? Turbine specs???



Home in Scituate is 3,100 feet from the turbine.

David Dardi, Scituate MA – Lives 3,100 feet from the turbine.

On August 9, 2012 the Boston Globe interviewed Dardi and wrote: Living more than a half-mile from the turbine, Dardi said, he initially couldn't believe it would make an audible noise, "but the reality is, it does." In a letter to the Globe on August 26, 2012 Dardi wrote: "I have been awakened many times and have been forced to shut the windows and take doctor-prescribed sleeping pills. The closest involvement most people will ever have with a windmill is seeing it when they drive by it. It is very easy to support something that you only read about and go to visit, but they should try sleeping under it."

Hancock

The Berkshire Wind project consists of ten
1.5 MW wind turbines on Brodie Mountain
in northwestern Massachusetts

Sherman Derby

Lives about ½ mile from the nearest turbine

Mr. Derby is a member of the Select Board.
“You wake up sometimes at two in the morning and it sounds a jet plane. When they said it would be no louder than a vacuum cleaner, that may be, but if your wife starts vacuuming next to your bed in the middle of the night, you’ll notice. It’s a heck of a roar. We’re up a lot of times because of the noise, we just can’t sleep.”



The Hoosac Wind project consists of ???
MW wind turbines on ??? in northwestern
Massachusetts



Hoosac Wind Project turbines behind Tim Danyliw's abandoned mountain home.

Photo by Larry Lorusso. larry@cytafex.com

"I still believe that renewables are a great idea, but you can't destroy people's lives," he [Tim Danyliw] said. "This is like a highway came down and my house is stuck in the median. I chose to live in a quiet place, a healthy place and [Hoosac wind farm] took that away from me."

Wind farms creating an environmental divide By [Erin](#)

[Ailworth](#) | GLOBE STAFF AUGUST 11, 2013

<http://www.bostonglobe.com/business/2013/08/10/wind-power-creating-environmental-divide/dwZZxuWlQPgahqt0wcg4ZK/story.html>

Tim Danyliw and Nancy Shea abandoned their mountain home after becoming ill after the wind turbines began operating.



Two Hoosac turbines as seen from Michael Fairneny's kitchen window in Florida MA.

Letter to Massachusetts DEP Official

From: **Michael Fairneny**

Date: Sat, Sep 6, 2014 at 10:38 PM

Subject: Hoosac Wind is TOO LOUD

Gentlemen,

Right here, Right now at 10 PM Saturday night, just getting home from work and getting out of my car in my driveway.....I'm telling you... I don't need a meter out there to tell that these things are way above 10 dbl over normal sound levels....They are blasting out there and extremely annoying and LOUD .

Jo Ann hasn't got home from her work ...yet....I'm not looking forward to her interpretation of a very trying situation.

I know I haven't contacted you too often, recently, but don't let that lead you to believe that we are okay or are at rest with this situation.....many folks have come to the realization that all is lost and they better let this go and continue to live their lives....well....

My life was this place....this house....this home?....

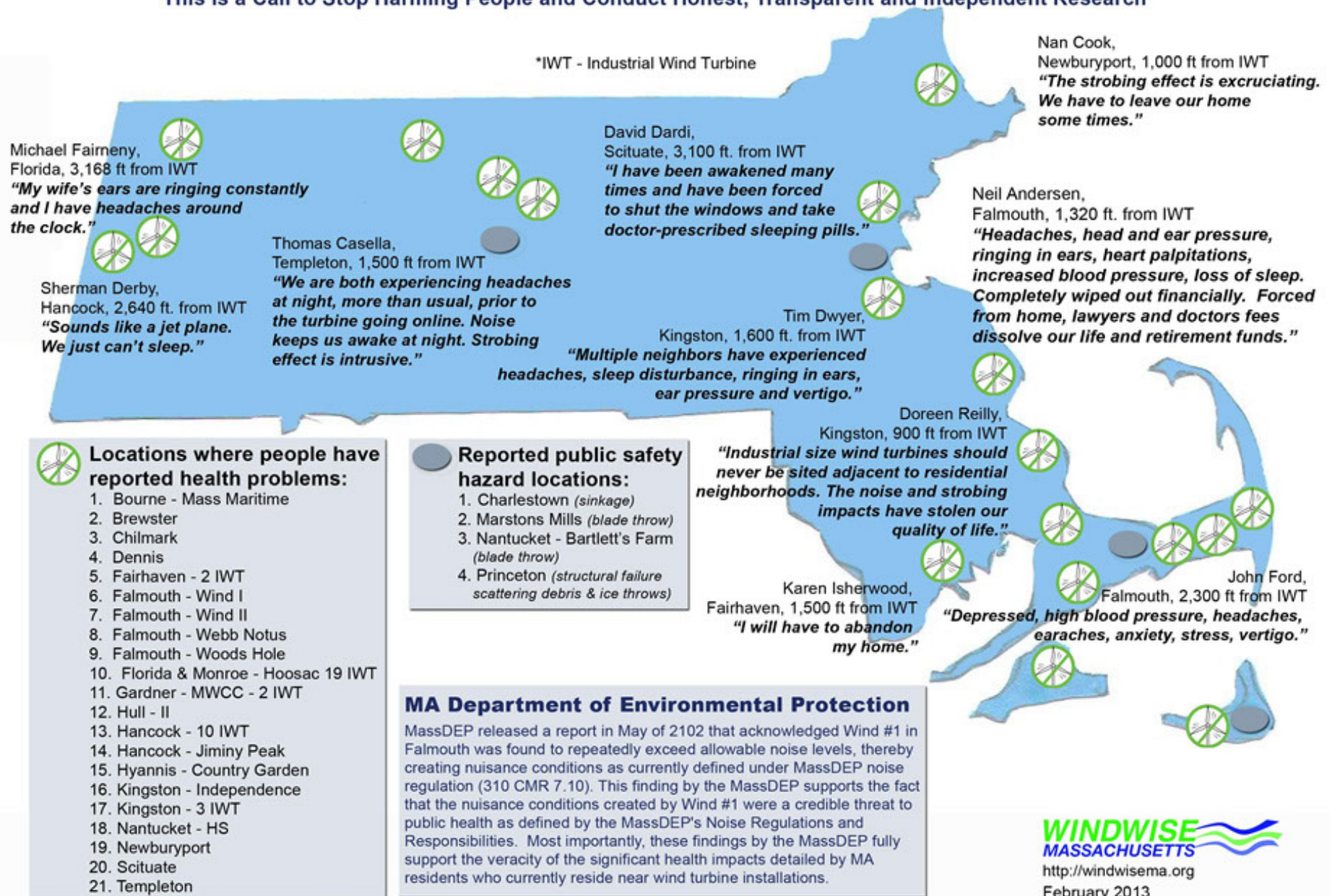
.....And I swear to you on my father's grave (Jo Ann just got home)....the first words out of her mouth were"those frickin things are loud tonight" .,,,,,Welcome home dear....

Help.....Please,

Public Health Disaster Rolling Across Massachusetts

Adverse Health Impacts from Wind Turbines

This is a Call to Stop Harming People and Conduct Honest, Transparent and Independent Research



- Article XCVII. Commonwealth of Massachusetts Constitution
- The people shall have the right to clean air and water, freedom from excessive and unnecessary noise, and the natural, scenic, historic, and esthetic qualities of their environment; and the protection of the people in their right to the conservation, development and utilization of the agricultural, mineral, forest, water, air and other natural resources is hereby declared to be a public purpose.